

## Proposed Agenda & Meeting Materials

**September 16, 2020 - 5:00 PM**

Capital Improvement Committee Meeting (CIC) – Special Session

Telephonic Meeting



---

### ATTENTION:

Protecting the public, our partners, and our staff are of the utmost importance.

Due to recent health concerns with the novel coronavirus and in compliance with the Governor's Executive Order 20-28.2 (amending 20-05, 20-28, 20-28.1 , 20-28.2, 20-28.3, 20-28.4 & 20-28. 7), this meeting will be held remotely.

The public is encouraged to participate via telephone or Zoom and will be given opportunities to comment, as noted below.

You can listen to the Capital Improvement Committee Meeting (CIC) online by following the instructions below: (either by online link or by phone)

**Topic: Metro Parks Tacoma Capital Improvement Committee (CIC) Meeting**

**Time: September 16, 2020 05:00 PM Pacific Time (US and Canada)**

**Join Zoom Meeting Online by clicking the link below:**

**<https://zoom.us/j/95041531173?pwd=ZUsvRmRLOUpNTWdZdGFxM085Zz09>**

<b>Or Dial:</b>	<b>(253) 215-8782</b>
Enter Meeting ID:	<b>950 4153 1173</b>
Password:	<b>039699</b>
Participant ID:	<b>No ID needed, just press #</b>

**Order of Presentation:** In general, each agenda item will include a short staff presentation, followed by board discussion. Public Comment is not taken at this committee meeting.



**BOARD OF PARK COMMISSIONERS  
CAPITAL IMPROVEMENT COMMITTEE  
AGENDA**

**September 16, 2020  
5:00 PM**

**MINUTES FROM August 26, 2020**

**PROJECT STATUS REPORT**

**DISCUSSION ITEMS**

- Foss Waterway

**ACTION ITEMS**

- City of Tacoma 6th Ave Railroad Crossing Improvements at 6th Ave – Real Property Adjustment
- WSDOT Interlocal Cooperation Agreement-Tacoma to Puyallup Regional Trail Connection Route Analysis Study

**FUTURE AGENDA TOPICS**

**ADJOURNMENT**



**BOARD OF PARK COMMISSIONERS  
CAPITAL IMPROVEMENT COMMITTEE  
(VIRTUAL MEETING)**

**August 26, 2020  
5:00 PM  
MINUTES**

**Attendees:** Commissioner Pointer, Commissioner Baines (absent)

**Staff Support:** **Debbie Terwilleger**, Planning Director; **Marty Stump**, Planning Deputy Director - Planning & Development Department; **Kristi Evans**, Capital Program Manager – Community & Neighborhood Parks; **Roger Stanton**, Capital Program Manager – Regional Parks & ZEED; **Claire Keller-Scholz**, Art, Culture, & Heritage Administrator; **Mary Kay Henley**, Planning Administration

**Acceptance of Minutes:** Minutes from the August 12, 2020 meeting were approved as written.

**Capital Project Status Update**

None

**Discussion Items**

**CIP Development Update**

- Marty presented an update on the CIP development process. He reported that further refinement will happen throughout the month of September. It was noted this is running parallel with MPT's budget development.
- A PowerPoint outlined completed 2014 Bond projects, those going out for bid and potential future projects. Community needs are being weighted heavily, noting new GIS mapping and equity index.
- We are approximately 3/4 of the way through the 2014 Bond, with between \$35- \$40M remaining to be scoped. A table listing work underway and being considered was discussed. Marty noted the Headquarters' project is moving forward, taking advantage of the closure due to COVID19 and PDZA is addressing critical infrastructure work.
  - Projects scheduled to go out for bid between now and the end of the year include: Dickman Mill, Meadow Park Bridge, NW Trek Tram Station, Owen Beach, Pubic Art Work, Point Defiance Marina repairs/infrastructure, Seymour Conservatory, and Swan Creek.
  - Projects scheduled for planning and design later this year include: Ft Nisqually (finalist for Heritage Grant), Portland Ave Playfield and TPS Green School Yards program at a couple elementary schools,
  - Projects originally scheduled to get underway in 2020, but pushed into 2021 due to COVID19 delays include Brownpoint, Melanie's Park, Point Defiance Park, Portland Ave Demo, and Tacoma Nature Center.

- Debbie explained project selection is based on 10 prioritization criteria and will focus on neighborhood parks in the upcoming biennium. She noted the delicate balance between infrastructure needs and community equity, highlighting Tacoma's south and eastside neighborhood parks. She asked for any project suggestions because time ran out during the recent Board CIP study session.
  - Commissioner Pointer recommended making sure projects are safe for the community and that we can adequately maintain any new structures.
- A final list of proposed CIP projects will be presented to the Board in October.
- Marty concluded the presentation, noting more details will be presented over the next couple months as proposed sites and projects are fine tuned.
- Commissioner Pointer asked about the Headquarters' Remodel project status. Roger reported we are currently securing the contract with the vendor. Once signed, work can begin most likely after Labor Day.
- Commissioner Pointer asked about Portland Avenues' wading pool demo. He added that the planned replacement spray ground will mean a lot to the community, noting the importance of equity in the different parts of Tacoma.
- Commissioner Pointer noticed three homeless tents at Peoples Park. He asked who will enforce the no tent rule, the City of Tacoma. Marty indicated that ongoing enforcement always a challenge, made more difficult due to reductions in staffing and resources impacting a number of agencies including Metro Parks and City of Tacoma. Marty will let MPT parks staff know about the mentioned tent violation.

**Meeting Adjourned**



**MEMORANDUM**

TO: Board of Park Commissioners

THROUGH: Shon Sylvia, Executive Director

FROM: Debbie Terwilleger, Director of Planning & Development

**SUBJECT: Surplusing and Conveying Real Property at Titlow Park to the City of Tacoma for the Construction of Railroad Safety Improvements**

DATE: September 23, 2020

**EXECUTIVE SUMMARY:** This resolution authorizes the surplus of 643 square feet of park property to the City of Tacoma in order to facilitate the construction and ongoing maintenance of pedestrian railroad crossing improvements at the terminus of 6<sup>th</sup> Avenue at Titlow Park. This resolution would also authorize the Executive Director to enter into the necessary agreements with the City of Tacoma.

**CAPITAL IMPROVEMENT COMMITTEE RECOMMENDATION:**

**BACKGROUND:** The Metropolitan Park District of Tacoma (“Metro Parks”) is the owner of Titlow Park, consisting of approximately 75 acres of real property and improvements located at the base of 6th Avenue and is bordered by 6th Avenue and Puget Sound and is bisected by the Burlington Northern Railroad railway tracks.

As a public safety improvement, City of Tacoma has designed and is prepared to construct certain pedestrian railroad crossing improvements and new ingress/egress into an abutting parking lot owned by Burlington Northern Railroad and adjacent to Titlow Park (the “Pedestrian Improvements”).

In order to construct the Pedestrian Improvements, the City must acquire from Metro Parks a portion of Titlow Park located in the western corner of the Park consisting of 643 square feet.

Metro Parks staff has collaborated with the City of Tacoma throughout the design of these improvements to ensure that maintenance and emergency access is maintained through the project area once the project has been completed, and that the improvements do not have an adverse impact upon public access and enjoyment to the waterfront area. Likewise efforts will be taken to minimize the impact upon public access to the waterfront during the construction process.

**FISCAL IMPACT:** Metro Parks shall receive from the City of Tacoma the value of the Pedestrian Improvement Property as determined by an appraisal dated January 17, 2020 and performed by a Washington State certified appraiser, who determined the value to be \$22,900.00.

**ADDITIONAL INFORMATION:** For additional information, please contact Debbie Terwilleger, Director of Planning & Development at (253) 305-1086 or [debbiet@tacomaparks.com](mailto:debbiet@tacomaparks.com).



## **METROPOLITAN PARK DISTRICT OF TACOMA**

### **RESOLUTION NO.**

#### **SURPLUSING AND CONVEYING CERTAIN REAL PROPERTY AT TITLOW PARK TO THE CITY FOR THE CONSTRUCTION OF A PEDESTRIAN RAIL CROSSING**

WHEREAS, the Metropolitan Park District of Tacoma (“Metro Parks”) is the owner of Titlow Park, consisting of approximately 75 acres of real property and improvements located at the base of 6<sup>th</sup> Avenue and is bordered by 6<sup>th</sup> Avenue and Puget Sound and is bisected by the Burlington Northern Railroad railway tracks.

WHEREAS, the City of Tacoma has designed and is prepared to construct certain pedestrian railroad crossing improvements and new ingress/egress into an abutting parking lot owned by Burlington Northern Railroad and adjacent to Titlow Park (the “Pedestrian Improvements”).

WHEREAS, in order to construct the Pedestrian Improvements, the City must acquire from Metro Parks a portion of Titlow Park located in the western corner of the Park consisting of 643 square feet as legally described on Exhibit “A” and depicted on Exhibit “B” (the “Pedestrian Improvement Property”).

WHEREAS, the value of the Pedestrian Improvement Property was determined by an appraisal dated January 17, 2020 and performed by a Washington State certified appraiser, who determined the value to be \$22,900.00.

WHEREAS, in order for the City to acquire the Pedestrian Improvement Property, it must either condemn the property or seek Metro Parks’ consent to transfer the property.

WHEREAS, it would be in the best interests of Metro Parks that the Pedestrian Improvements be constructed, which would be a benefit to the Titlow Park users.

WHEREAS, Chapter 39.33 RCW (Intergovernmental Disposition of Property) permits local government units to transfer or exchange title to real property on such terms and conditions as may be mutually agreed upon. NOW, THEREFORE BE IT

RESOLVED by unanimous vote of the Board of Park Commissioners of the Metropolitan Park District of Tacoma that the Pedestrian Improvement Property is declared surplus and shall be transferred to the City of Tacoma in accordance with Chapter 39.33 RCW in exchange for payment of \$22,900. It is

FURTHER RESOLVED by unanimous vote of the Board of Park Commissioners of the Metropolitan Park District of Tacoma that the Executive Director is hereby authorized to execute such documents as necessary to effect the transfer of the Pedestrian Improvement Property to the City of Tacoma.

The foregoing resolution was adopted by the Board of Park Commissioners of the Metropolitan Park District of Tacoma at a regular meeting held on \_\_\_\_\_, 2020.

ATTEST: \_\_\_\_\_  
President

\_\_\_\_\_  
Secretary

\_\_\_\_\_  
Clerk



**EXHIBIT A**  
Legal Description of Pedestrian Easement Area

**EXHIBIT "A"**

**LEGAL DESCRIPTION**

THAT PORTION OF THE NORTHEAST QUARTER OF THE SOUTHEAST QUARTER OF SECTION 4, TOWNSHIP 20 NORTH, RANGE 2 EAST OF WILLAMETTE MERIDIAN, PIERCE COUNTY, WASHINGTON, MORE PARTICULARLY DESCRIBED AS FOLLOWS:

COMMENCING AT A BRASS DISK WITHIN A CASED MONUMENT MARKING THE INTERSECTION OF SIXTH AVENUE AND WALTERS ROAD FROM WHICH ANOTHER 3-INCH DIAMETER SURFACE BRASS DISK STAMPED 'PIERCE COUNTY DEPT. OF PUBLIC WORKS' BEARS NORTH 73°48'13" WEST A DISTANCE OF 285.75 FEET;

THENCE NORTH 73°48'13" WEST A DISTANCE OF 153.15 FEET;

THENCE NORTH 16°11'47" EAST A DISTANCE OF 1.73 FEET TO A POINT MARKING THE INTERSECTION OF THE NORTHERLY MARGIN OF SAID SIXTH AVENUE AND THE EASTERLY MARGIN OF THE BURLINGTON NORTHERN SANTE FE RAILROAD RIGHT OF WAY, SAID POINT BEING THE TRUE POINT OF BEGINNING;

THENCE SOUTH 88°18'55" EAST ALONG SAID NORTHERLY MARGIN A DISTANCE OF 37.30 FEET;

THENCE DEPARTING SAID MARGIN NORTH 25°39'59" WEST A DISTANCE OF 38.79 FEET TO A POINT ON SAID EASTERLY MARGIN OF THE BURLINGTON NORTHERN SANTE FE RAILROAD RIGHT OF WAY FROM WHICH THE POINT OF BEGINNING BEARS SOUTH 31°09'19" WEST A DISTANCE OF 39.58 FEET;

THENCE SOUTH 31°09'19" WEST ALONG SAID EASTERLY MARGIN A DISTANCE OF 39.58 FEET TO THE POINT OF BEGINNING.

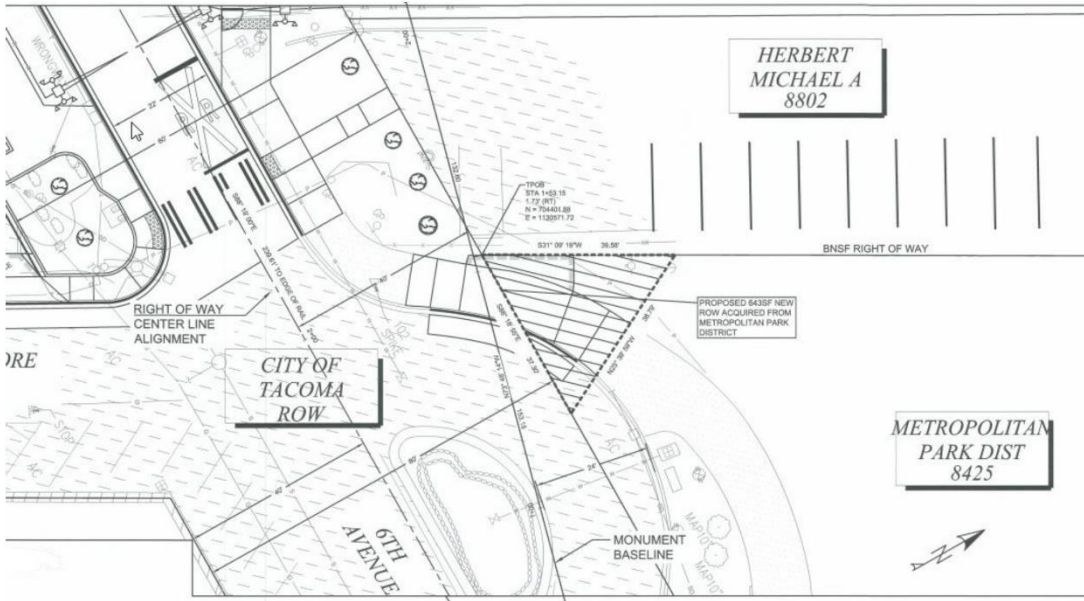
ALL SITUATE IN THE CITY OF TACOMA, COUNTY OF PIERCE, STATE OF WASHINGTON.

{CONTAINING 643± SQUARE FEET OR APPROXIMATELY 0.01 ACRES}

**EXHIBIT B**  
Depiction of Pedestrian Easement Area

**EXHIBIT "B"**

**MAP DEPICTION**





## **MEMORANDUM**

TO: Board of Park Commissioners

THROUGH: Shon Sylvia, Executive Director

FROM: Debbie Terwilleger, Director of Planning & Development

**SUBJECT: WSDOT Interlocal Cooperation Agreement  
Tacoma to Puyallup Regional Trail Connection Route Analysis**

DATE: September 23, 2020

**EXECUTIVE SUMMARY:** This resolution authorizes the appropriation of up to \$20,000.00 from the 2014 UTGO Bond Funds Trails and Pedestrian System Partnerships for the Tacoma to Puyallup Regional Trail Connection Route Analysis led by WSDOT and in partnership with WSDOT, Metro Parks Tacoma, the Puyallup Tribe of Indians, the cities of Fife, Puyallup, and Tacoma, and Pierce County. This resolution would also authorize the Executive Director to enter into the necessary agreements with WSDOT.

## **CAPITAL IMPROVEMENT COMMITTEE RECOMMENDATION:**

**BACKGROUND:** Metro Parks Tacoma regularly seeks partnerships to share capital project planning and development opportunities that provide community value for the citizens of Tacoma. In 2019, WSDOT, in partnership with the Puyallup Tribe of Indians, the cities of Fife, Puyallup, and Tacoma, Metro Parks Tacoma and Pierce County, studied options to create a new regional trail connecting communities between downtown Tacoma and downtown Puyallup. The Tacoma to Puyallup Regional Trail (T2P) Route Analysis evaluated three options for the new trail:

- Levee Road
- River Road
- SR 167 new alignment

Throughout 2019, a stakeholder advisory group consisting of representatives from local jurisdictions and active transportation organizations discussed the three route options. In February 2020, the group recommended moving forward with the SR 167 new alignment option.

Metro Parks has agreed to reimburse WSDOT up to \$20,000.00 for the study in consultant fees. This project provides a critical bicycle and pedestrian connection between Tacoma and Puyallup.

**FISCAL IMPACT:** The \$20,000.00 contribution will support the Tacoma to Puyallup Regional Trail Connection Route Analysis.

**ADDITIONAL INFORMATION:** For additional information, please contact Debbie Terwilleger, Director of Planning & Development at (253) 305-1086 or [debbiet@tacomaparks.com](mailto:debbiet@tacomaparks.com).

**METROPOLITAN PARK DISTRICT OF TACOMA**

**RESOLUTION NO. R-16  
WSDOT INTERLOCAL COOPERATION AGREEMENT  
TACOMA TO PUYALLUP REGIONAL TRAIL CONNECTION  
ROUTE ANALYSIS STUDY**

WHEREAS, Metro Parks Tacoma regularly seeks partnerships to share capital project planning and development opportunities that provide community value for the citizens of Tacoma, and

WHEREAS, WSDOT is in partnership with Metro Parks Tacoma, the Puyallup Tribe of Indians, the cities of Fife, Puyallup, and Tacoma, and Pierce County to complete the Tacoma to Puyallup Regional Trail Connection Route Analysis Study, and

WHEREAS, the Board of Park Commissioners of the Metropolitan Park District of Tacoma wishes to enter into an Interlocal Cooperation Agreement with the WSDOT for the Tacoma to Puyallup Regional Trail Connection Route Analysis Study, and

WHEREAS, the Board of Parks Commissioners wishes to allocate funds in order to participate in this partnership;

Now, therefore, be it

RESOLVED by the Board of Park Commissioners of the Metropolitan Park District of Tacoma that a maximum contribution of \$20,000 is allocated from the 2014 Capital Bond Funds Trails and Pedestrian System Partnerships to reimburse WSDOT up to \$20,000.00 for the study in consultant fees and give authorization to the Executive Director to sign the Interlocal Cooperation Agreement with WSDOT.

The foregoing resolution was adopted by the Board of Park Commissioners of the Metropolitan Park District of Tacoma at a regular meeting held on \_\_\_\_\_2020.

\_\_\_\_\_

President

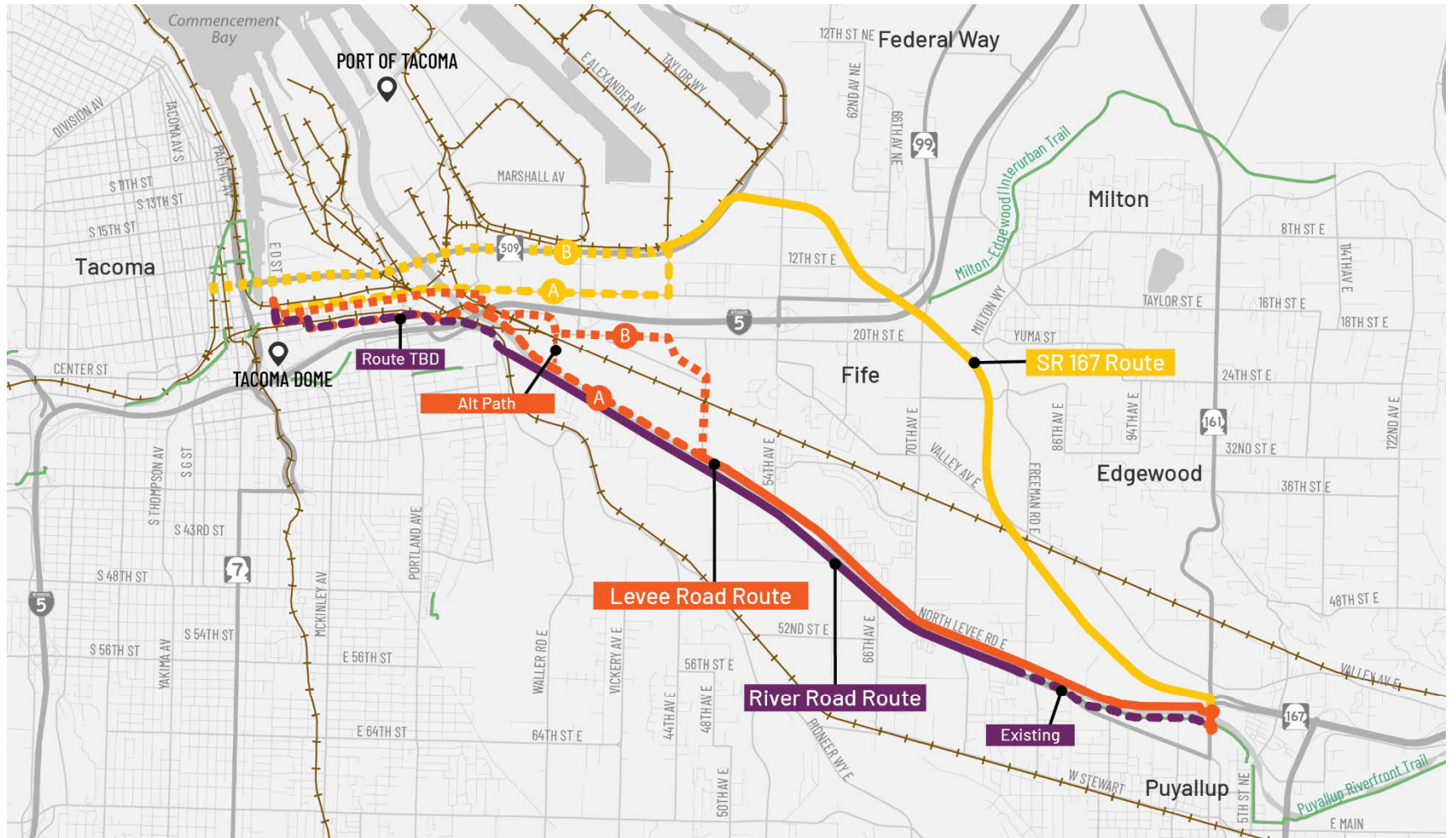
ATTEST:

\_\_\_\_\_

Secretary

\_\_\_\_\_

Clerk



Source:



### Potential Trail Alignments

- Levee Road Route
- River Road Route
- SR 167 Route
- Rail
- Existing Trail

Figure A Representative Route Alignments and Options