



This is  
*why*

METROPOLITAN PARK DISTRICT OF TACOMA

# Park Board COW Portland Avenue Park Planning Update

January 18, 2022



# Tonight's Agenda

- Park Planning Context
- Masterplan Objectives & Process
- Status of Interim Projects/Site Features
- Community Outreach & Engagement
- Summary of Next Steps





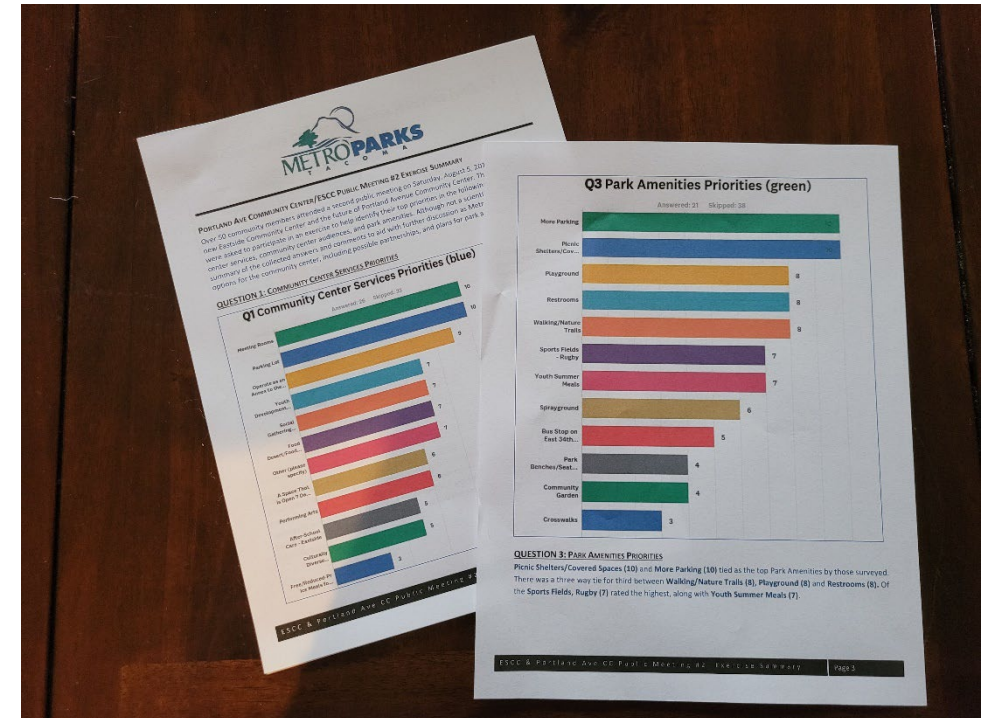
# Park Planning Context: 2017 - 2021

- **2017 Community Process**
  - ECC Community Center transition
  - Park Board commitment to retain property
  - Community conversations over high priority center services and park priorities
- **2018- 2020;**
  - Lease negotiated with KWA in Oct. 2018
  - Wading pool shut down due to safety issues;
  - KWA ends lease, moves out in Jan. 2020
  - COVID shuts down MPT facilities & masterplanning process—2020
- **2021**
  - Interim use: Eloise's Cooking Pot
  - MPT looking at interim site activation options
  - May arson fire closes building

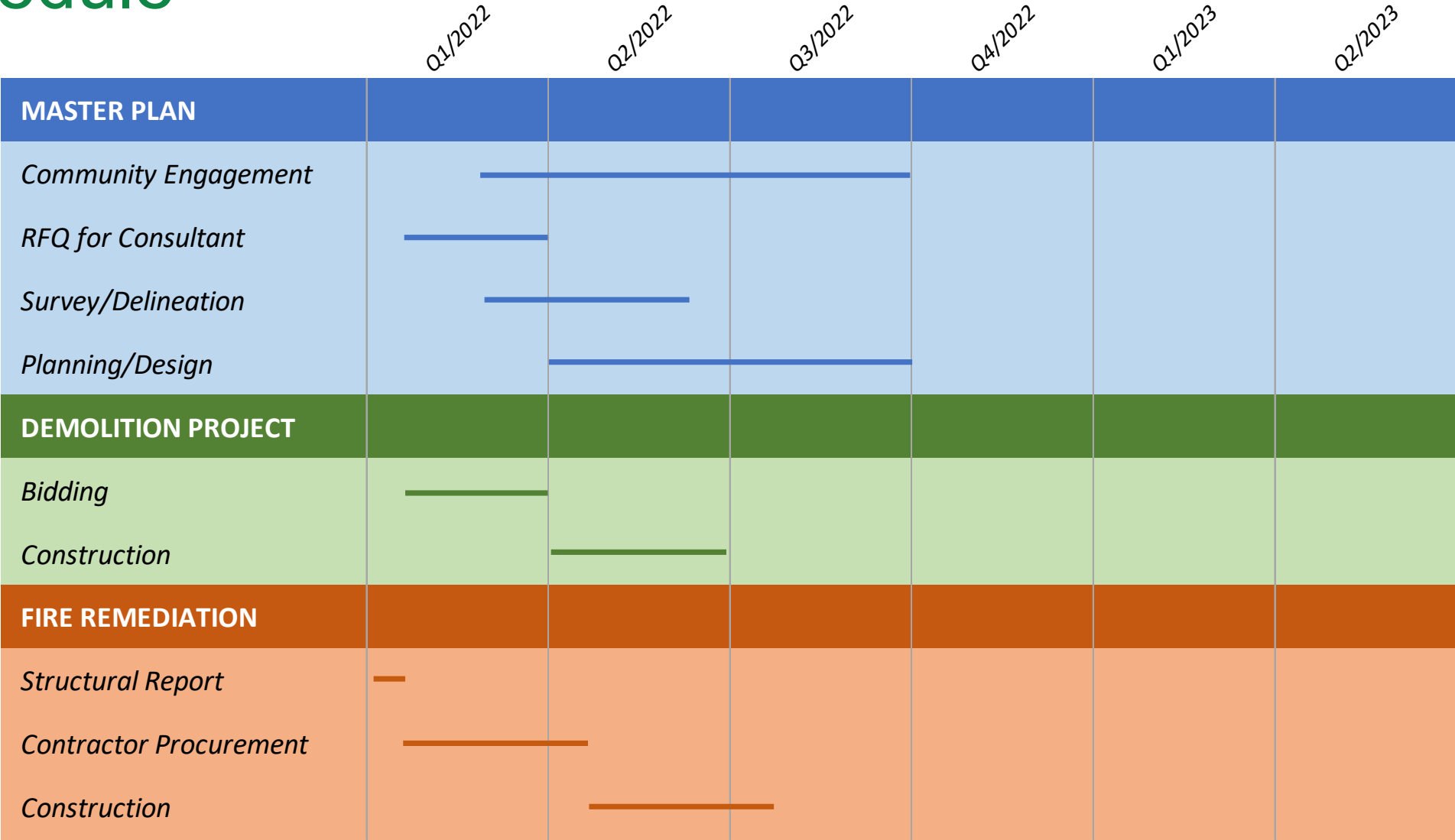


# Park Planning Context: 2022

- **District-wide System Planning**
  - 10 minute walk
  - Safe Routes to Parks
  - Level of Service Plans
    - Amenity-specific; (ex. spraygrounds/dog parks; cultural centers)
- **Portland Ave. Park Master Plan Update**
  - Planning to cover whole site
  - Build from existing feedback
  - Program element assumptions



# Schedule



# Masterplan Objectives

- **Goals for the design:**
  - Updated park for multiple users with high quality facilities
  - Safety
  - Park/Building Connection
  - Consideration of current and future uses through equity lens
- **Other Factors:**
  - Utilize extensive feedback from community
  - Neighborhood Connectivity and Active Transportation Links
  - Near Term Building Activation





# Master Plan Process

- **Master Plan:**
  - Communication and outreach plan developments
  - Schedule to Advertise RFQ for A&E services on January 25, 2022
- **A&E Scopes:**
  - RFQ to provide teams for public outreach, park program development, design alternatives & final master plan approval
- **Survey**
  - Wetland Delineation
  - Cultural Resources Study



2008 Concept Plan

# Status of Interim Projects/Site Features

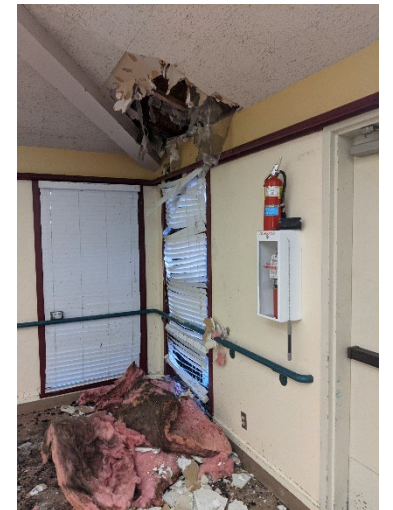
- **Wading pool:**
  - Advertise for a re-bid of wading pool demolition – Q1 2022
  - Confirm replacement sprayground in masterplan process
- **Restrooms:**
  - Keep at this time, pending completion of park master planning
- **Fields/Courts/Playground:**
  - Evaluate functions/needs
- **Parking**
  - Evaluate needs/location





# Status of Interim Projects: Building

- **Fire Remediation:**
  - Structural Assessment received via insurance adjustment January 2022
  - Seeking to repair the damage
  - Initiating contractor procurement for repair of building to pre-fire condition
- **Building Activation:**
  - Near term tenant options
  - Continue planning for long-term building use for community benefit



# Community Outreach and Engagement



- Early Outreach to community partners;
- MPT is seeking to build a government-to-government relationship with the Puyallup Tribe, based upon a history of agreements between the United States and Native American Tribes;
- External/Internal Groups:
  - Renters, Safe Streets, local organizations and schools within a 10-minute walk; East Tacoma Collaborative; Tacoma Rugby; neighborhood coalitions; faith communities; Equity Action Collaborative etc.
  - Advisory Councils, Public Arts Advisory Committee, MPT staff

# Outreach and Engagement

The project will establish a comprehensive, long-term master plan for Portland Avenue Park envisions a multi-faceted Outreach and Engagement Strategy to include:

## Governance and Agency Leadership Committee

- Metro Parks, City of Tacoma, Puyallup Tribe of Indians, Pierce Transit, & Others
- To consider broad policy direction, long-range property management, leveraging and programming opportunities

## Community Advisory Committee

- Neighbors, Park Users, Clubs, Local Organizations & Others
- To establish and communicate neighborhood, community and programming priorities through planning process



# Key Questions for the Board:

- What additional guidance/assumptions would the Board want us to take into consideration as we start the process?
- Based on your current vision, who do you need to hear from to either confirm or evolve your vision for this property?



# Summary of Next Steps:

- Confirm Overall Project Work Plan & Objectives
- Proceed with modified wading pool demolition project
- Complete building repairs
- Establish project steering committees and begin outreach and engagement
- Further relationship building with Puyallup Tribe of Indians
- Procure A/E services of planning consultant through competitive RFP process and begin planning process
- Explore opportunities for near-term building activation
- Seek Future CIP and Grant Funding Opportunities



A wide-angle photograph of a large, well-maintained green field, likely a park or sports field. In the background, a baseball field is visible, enclosed by a black metal fence. The sky is bright blue with scattered white clouds. The overall scene is bright and open.

# Questions?